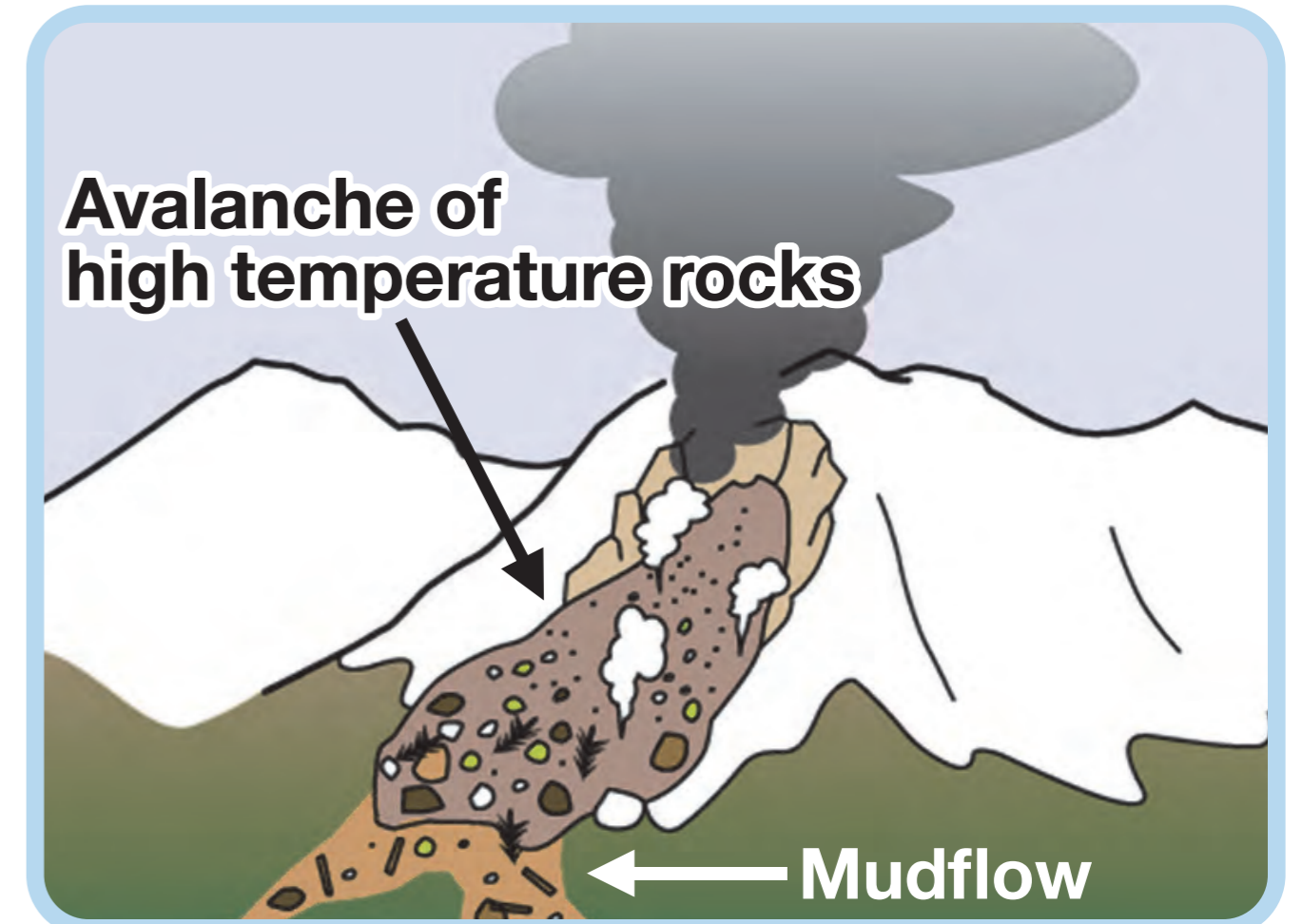
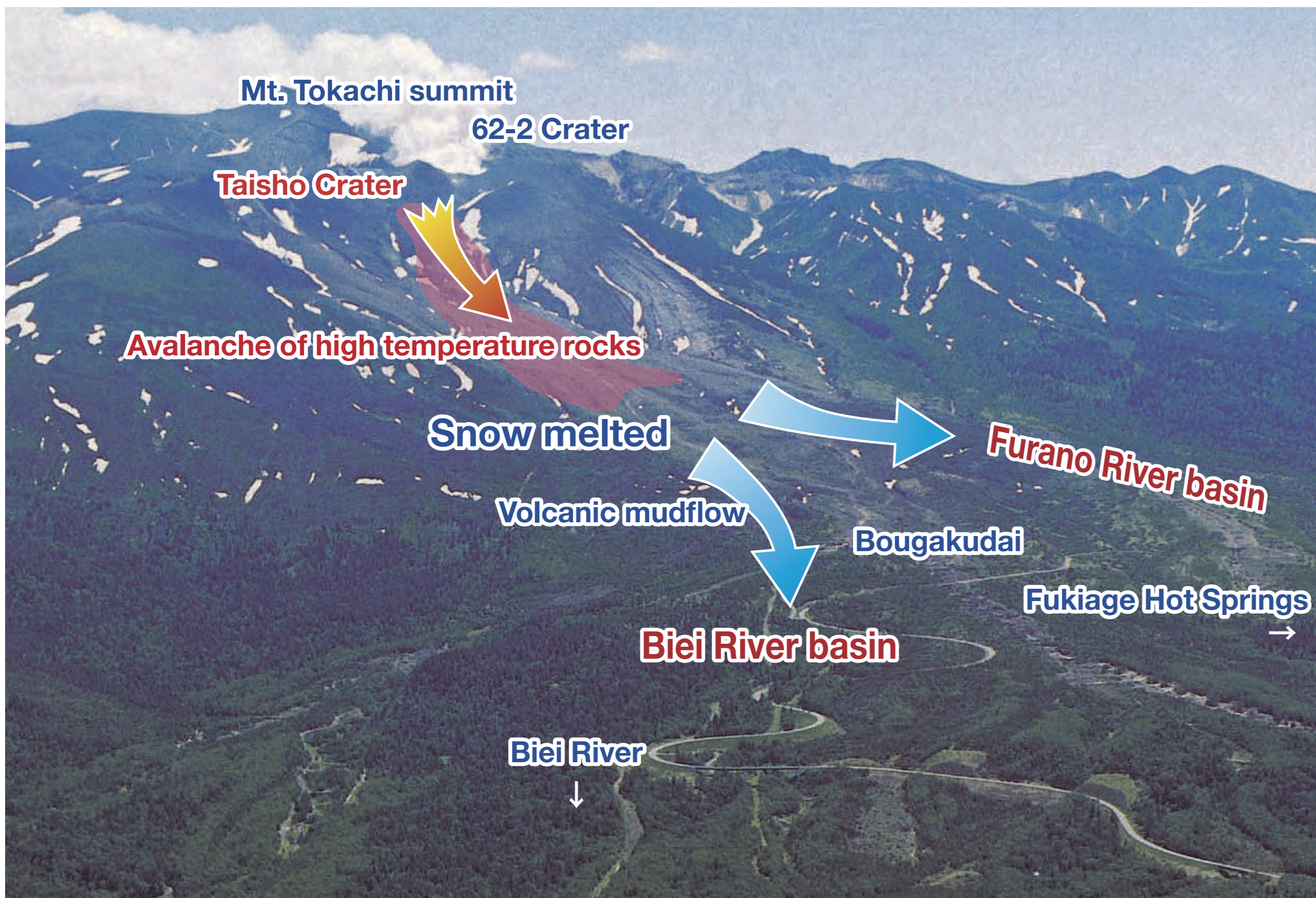


The Taisho Mud Flow Which Happened at Mt. Tokachi.

On May 24, 1926 at 4:17 pm, Mt. Tokachi erupted and part of the mountain collapsed in an avalanche of high temperature rocks. This avalanche melted snow remaining on the mountain, immediately causing a volcanic mudflow divided by the Furano and Biei Rivers. This mudflow traveled for about 25 minutes and reached as far as the town at the foot of the mountain. The volume of mud was so great that it overflowed from the rivers into the surrounding area, becoming a massive disaster.



The mudflow devastated the forest, then carried that wood and upstream sediment with it, increasing its destructive force. The entire town at the foot of the mountain was covered in a sea of driftwood that left 144 people dead or missing.



A Sea of Driftwood

Large amounts of driftwood amplified the mudflow's destructive power, sweeping away many homes and demolishing the farmlands of Kamifurano.



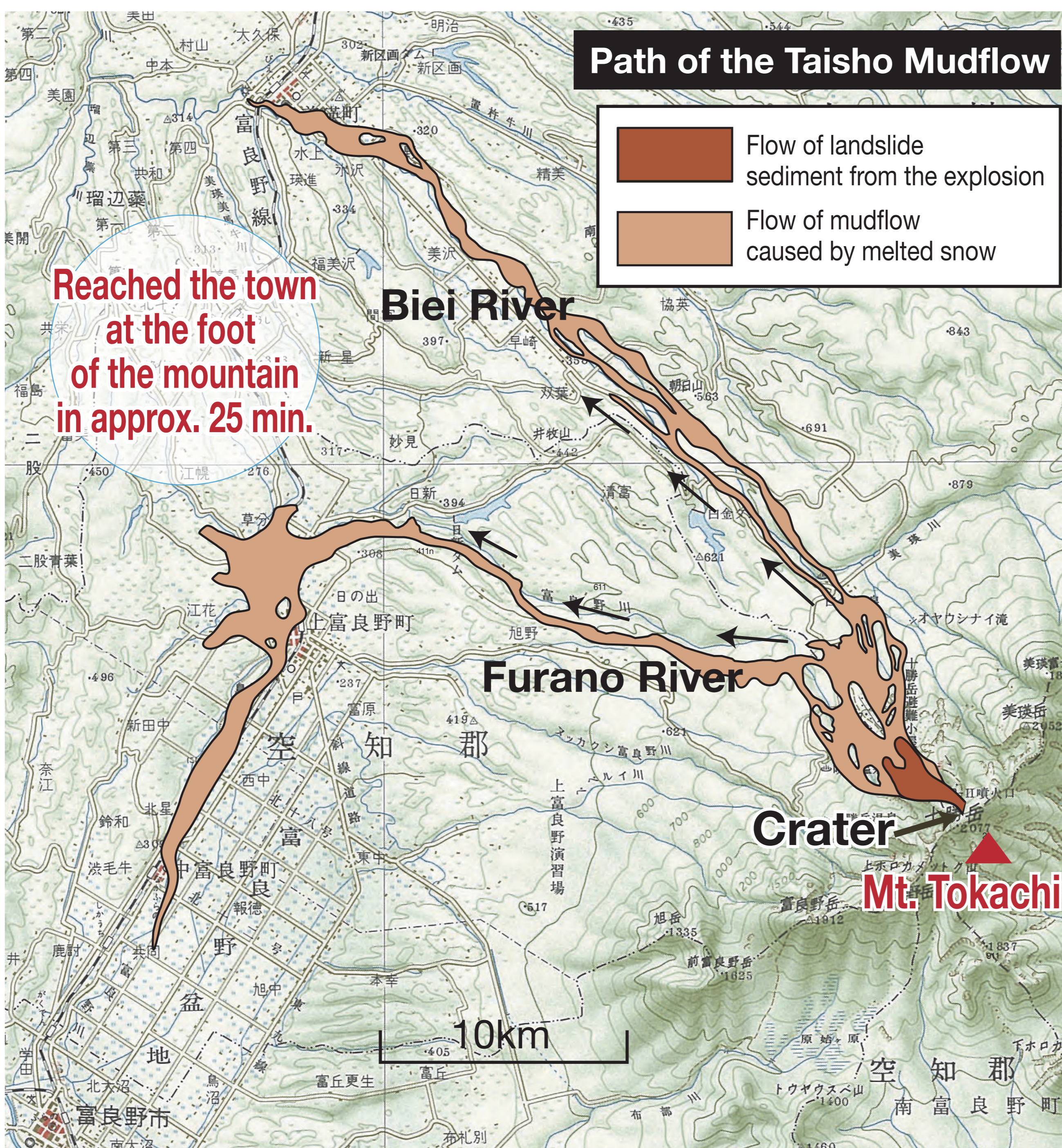
The aftermath of the Taisho Mudflow

Photo courtesy of Fumio Tada, University of Tokyo



Terrible Destruction

The mudflow was powerful enough to flip train tracks
From a postcard courtesy of the Asahikawa Postcard Club



1:200,000 scale topographic map of the Asahikawa area published by the Geospatial Information Authority of Japan