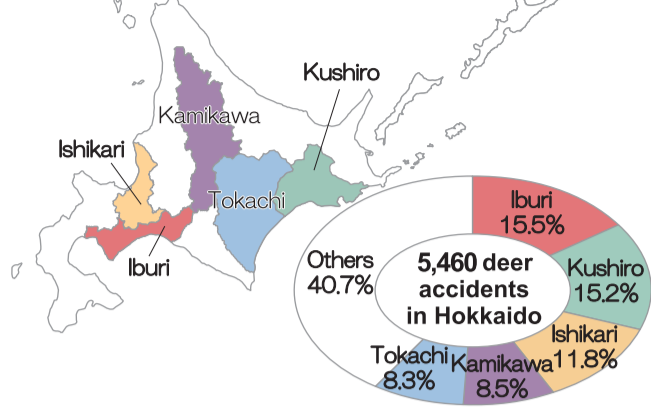
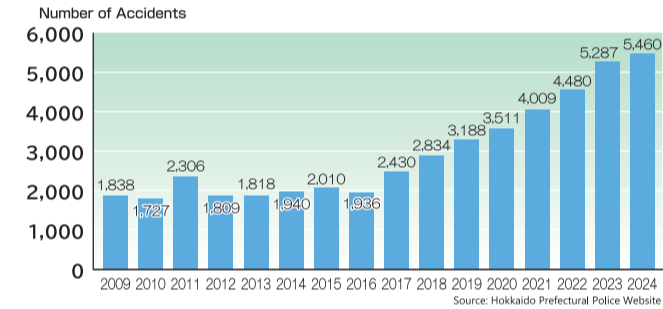


## How to Avoid Accidents with Deer

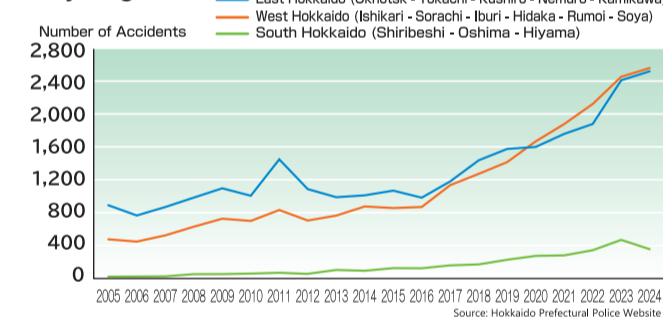
To prevent car accidents, please slow down your automobile. Deer-related road accidents are on the rise throughout Hokkaido, up to 5,460 accidents in 2024.



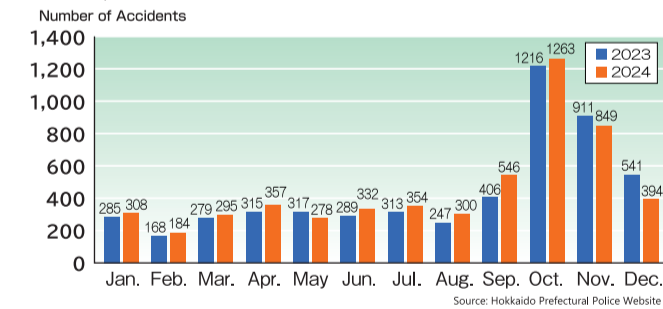
### Number of Ezo Sika Deer Accidents per Year (Hokkaido)



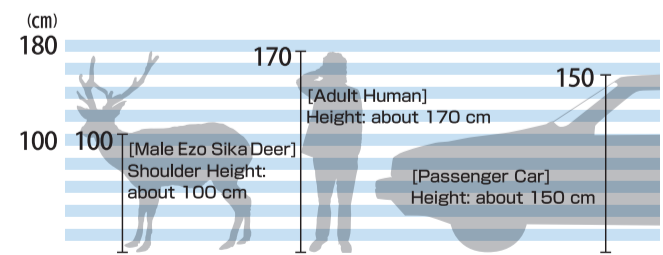
### Number of Ezo Sika Deer Accidents per Year (By Region)



### Number of Ezo Sika Deer Accidents per Month (2023,2024)



An individual adult Ezo Sika deer is comparable in size to a human or a passenger car. A collision could injure the occupants of the car!!



### Vehicle Repair Costs due to Ezo Sika Deer Accidents (Vehicle Insurance Payout Amount)

**Average 615 Thousand Yen**

#### Personal Experience of Encountering Ezo Sika Deer While Driving

While driving on National Route 44, I encountered two deer suddenly jumping out onto the road. I jammed on the brakes, so that I could avoid an accident. Because of vehicles approaching from the opposite direction, turning the steering wheel would lead to a serious accident. (Sapporo/30s/Male)

## Drive Map - Distances and Times

While the distance may seem to be short on a map, it might actually be far away in real terms. Since the speed limits can change according to climate, it is important to plan your driving trip in Hokkaido free from time constraints.



For the latest national and prefectural road closure information... Visit the "Road Information Provision System" mobile site!

Smartphone, Mobile, and PC compatible

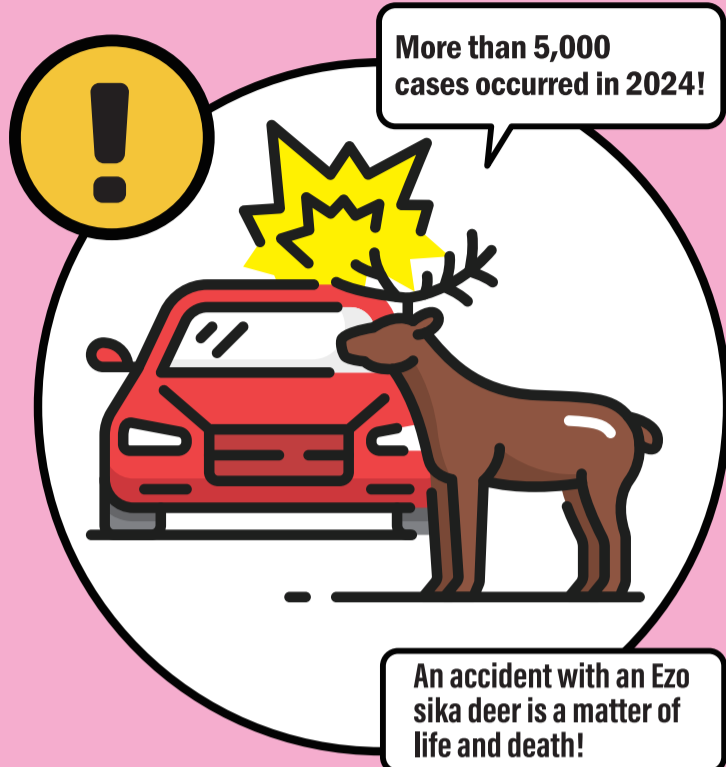
<https://www.road-info-prvs.mlit.go.jp/roadinfo>

X (Formerly known as Twitter)

[https://x.com/hkd\\_mlit\\_road](https://x.com/hkd_mlit_road)

# We can avoid deer accidents!

## EZO SIKA DEER ACCIDENT MAP



When and where will they appear? Know the risks!

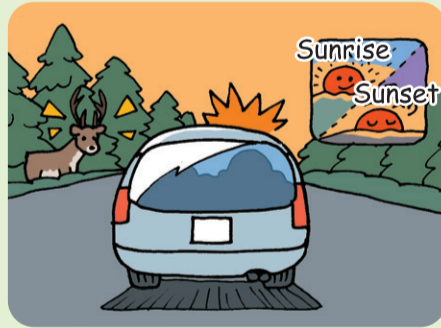


### Understand the Behavior of Ezo Sika Deer to Stay Safe

# Six Rules to Avoid Deer Collisions

Slow down in any of these Situations

#### 1 Deer often jump out at early morning or evening!



Deer are most active at sunrise and around sunset.

#### 4 Deer are clumsy on paved roads!



The Ezo Sika deer is known to be swift and graceful, but its movement is clumsy on paved roads. Even when cars approach, deer sometimes do not run away.

#### 2 Deer are seldom alone!



Ezo Sika deer behave in herds. After the first deer crosses a road, several more will often follow, sometimes suddenly jumping out.

#### 5 Brake marks on mountain roads are signs of danger!



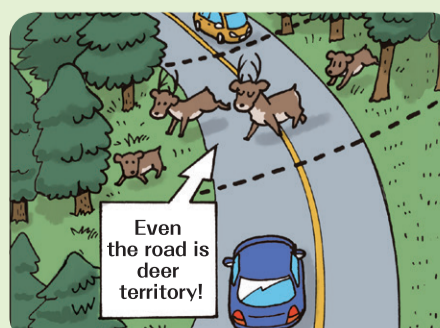
Black brake marks on the road may be a sign of deer activity. Take these as a warning, and slow down.

#### 3 Shining spots at night mean danger!



The eyes of Ezo Sika deer appear to glow as they reflect the light from vehicle headlights.

#### 6 Keep an eye on roadside forests!



Ezo Sika deer consider roads that pass through forests as just another part of their territory. Whenever you are near forests, be aware that deer could jump out at any time.

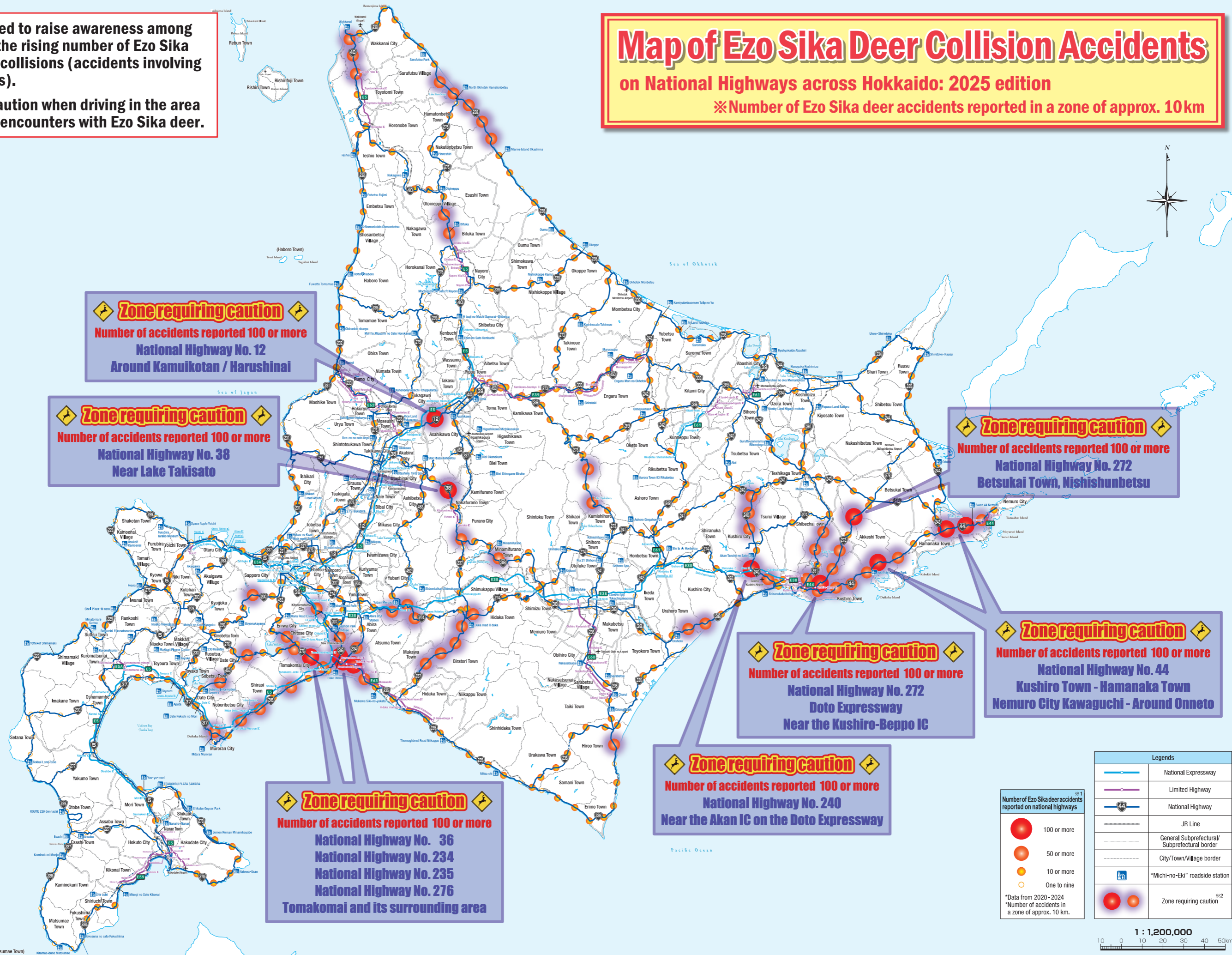
This map is provided to raise awareness among road users about the rising number of Ezo Sika deer-related road collisions (accidents involving vehicles and trains).

Please exercise caution when driving in the area to avoid potential encounters with Ezo Sika deer.

# Map of Ezo Sika Deer Collision Accidents

on National Highways across Hokkaido: 2025 edition

※ Number of Ezo Sika deer accidents reported in a zone of approx. 10 km



**Zone requiring caution**  
 Number of accidents reported 100 or more  
 National Highway No. 12  
 Around Kamuikotan / Harushinai

**Zone requiring caution**  
 Number of accidents reported 100 or more  
 National Highway No. 38  
 Near Lake Takisato

**Zone requiring caution**  
 Number of accidents reported 100 or more  
 National Highway No. 272  
 Betsukai Town, Nishishunbetsu

**Zone requiring caution**  
 Number of accidents reported 100 or more  
 National Highway No. 272  
 Doto Expressway  
 Near the Kushiro-Beppo IC

**Zone requiring caution**  
 Number of accidents reported 100 or more  
 National Highway No. 44  
 Kushiro Town - Hamanaka Town  
 Nemuro City Kawaguchi - Around Onneto

**Zone requiring caution**  
 Number of accidents reported 100 or more  
 National Highway No. 36  
 National Highway No. 234  
 National Highway No. 235  
 National Highway No. 276  
 Tomakomai and its surrounding area

Legends	
	National Expressway
	Limited Highway
	National Highway
	JR Line
	General Subprefectural/ Subprefectural border
	City/Town/Village border
	"Michi-no-Eki" roadside station
	Zone requiring caution <sup>※2</sup>

Number of Ezo Sika deer accidents reported on national highways<sup>※1</sup>

- 100 or more
- 50 or more
- 10 or more
- One to nine

\*Data from 2020 - 2024  
 \*Number of accidents in a zone of approx. 10 km.



※1 Number of accidents reported by the Hokkaido Regional Development Bureau  
 ※2 High-risk section: section with more than 50 accidents over a stretch of approx. 10km