

## 6. 眩光防止網および

眩光防止板





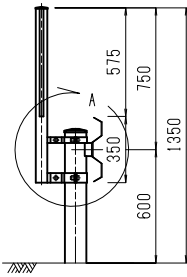


高規格道路 (自専道)	図面記号 名称	A 1-1 眩光防止網
----------------	------------	----------------

単位：mm

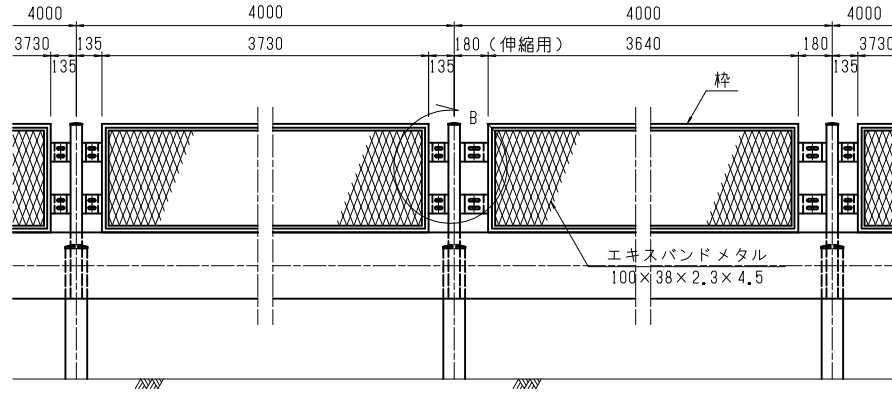
側面図

S=1:40



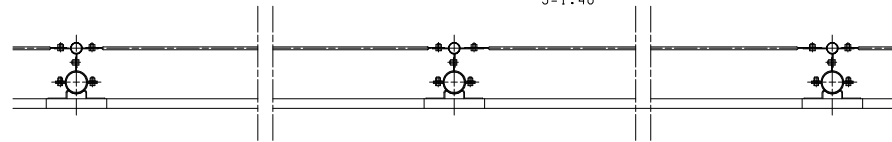
正面図

S=1:40



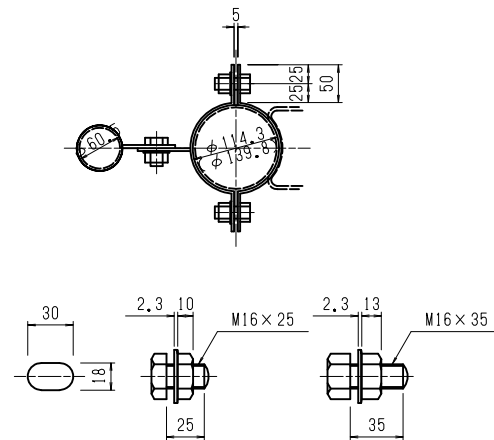
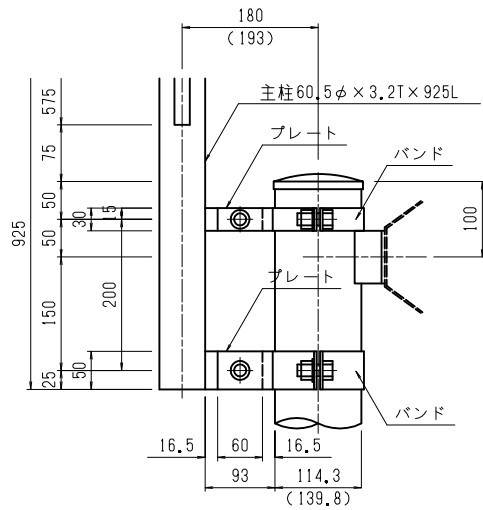
平面図

S=1:40



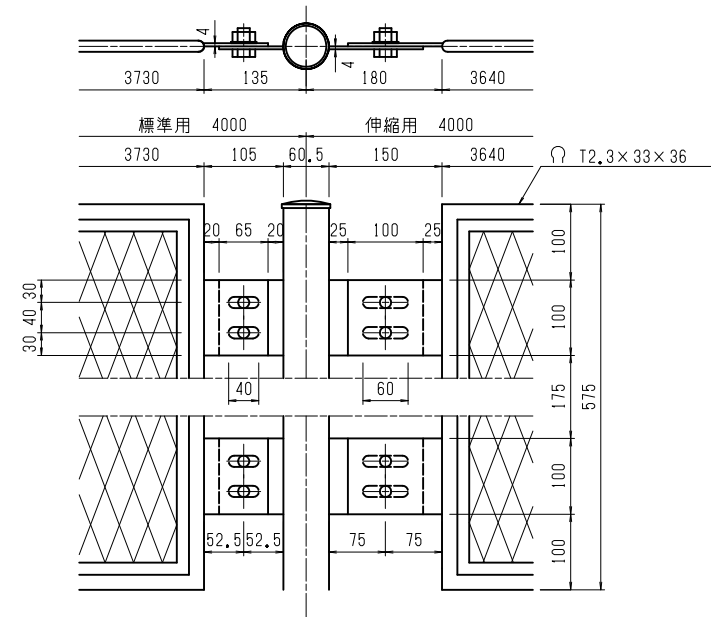
詳細図 (A部)

S=1:10



詳細図 (B部)

S=1:10



高規格道路 (自専道)	図面記号 A 1-2
名称	眩光防止網

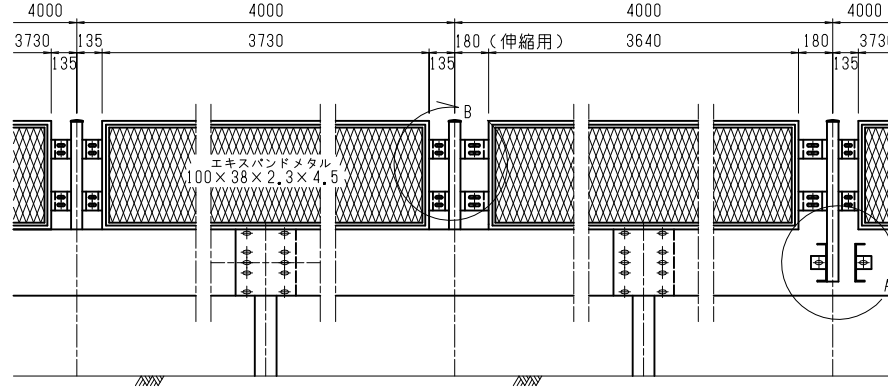
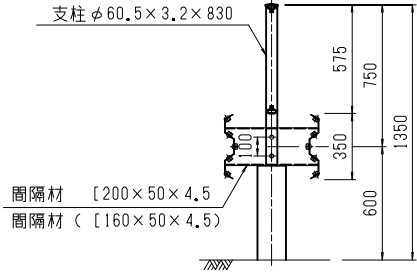
単位：mm

側面図

S=1:40

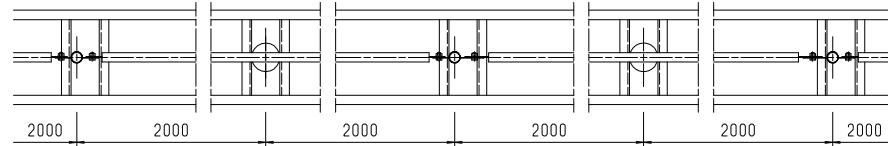
正面図

S=1:40



平面図

S=1:40



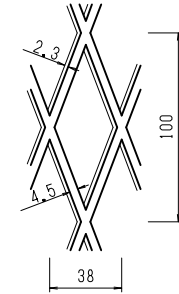
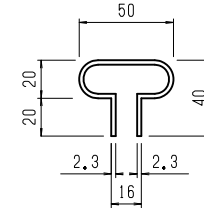
枠材詳細図

エキスパンドメタル

S=1:4

t=2.3

S=1:4

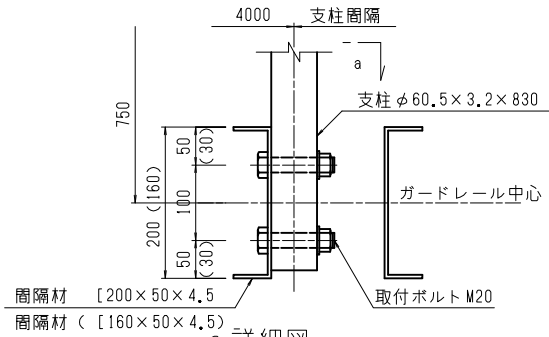


詳細図 (B部)

S=1:10

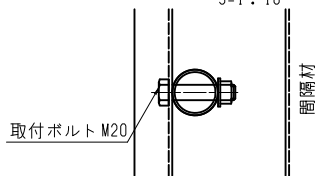
A部詳細図

S=1:10



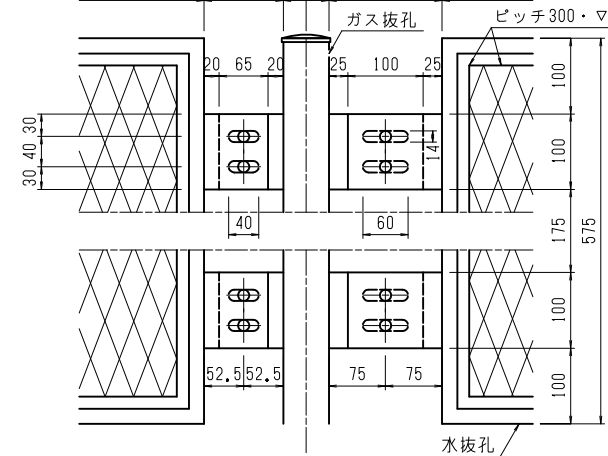
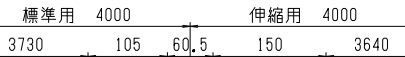
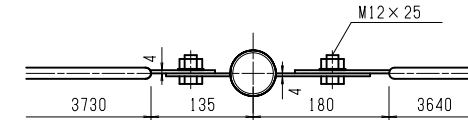
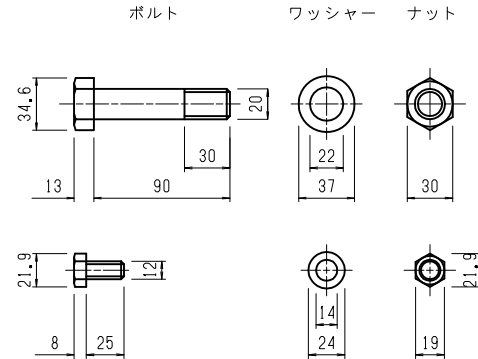
a 詳細図

S=1:10



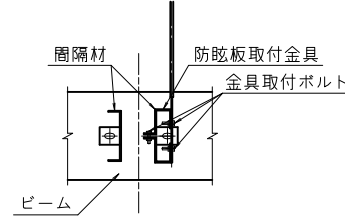
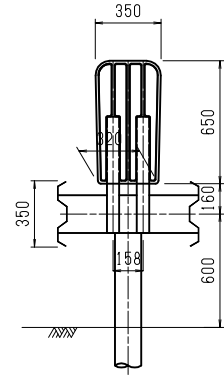
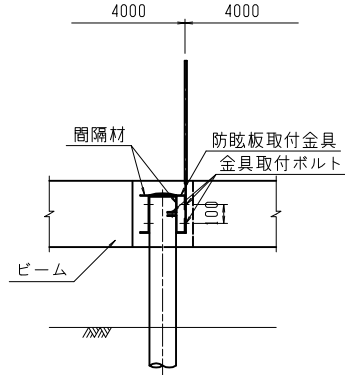
ボルト, ナット, ワッシャー詳細図

S=1:5

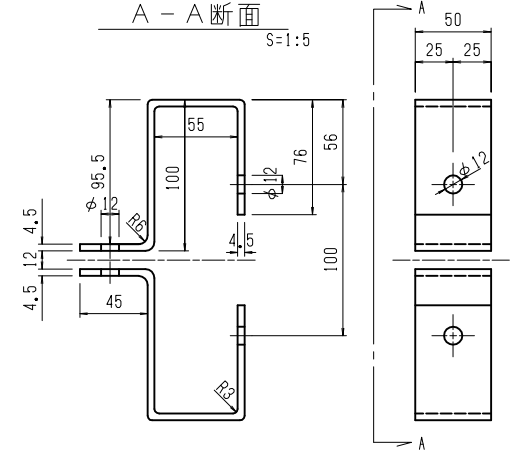


高規格道路 (自専道)	図面記号 名称	As 眩光防止板
----------------	------------	-------------

眩光防止板設置図  
支柱取付 S=1:40

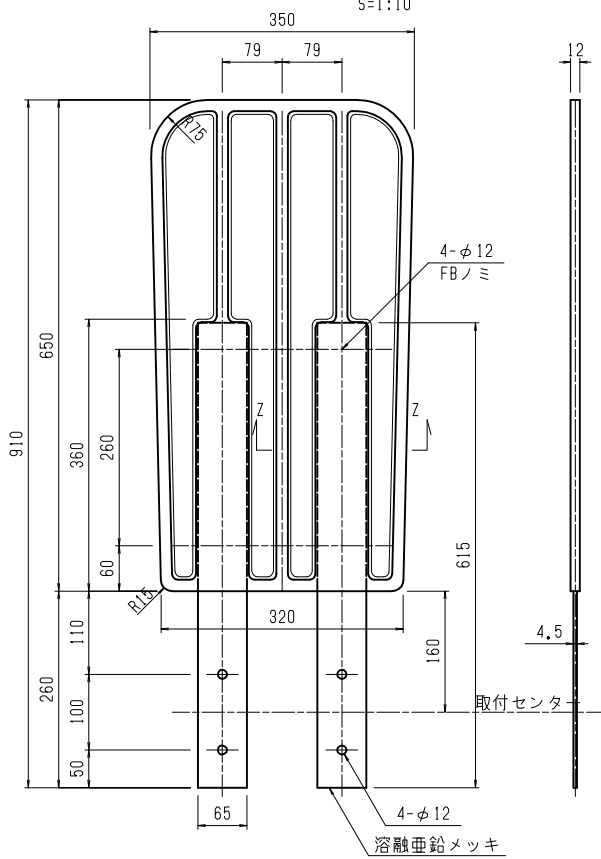


A - A 断面 S=1:5

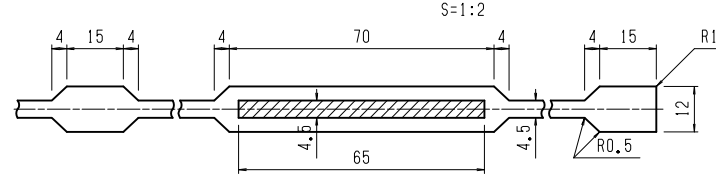


単位: mm

眩光防止板 S=1:10



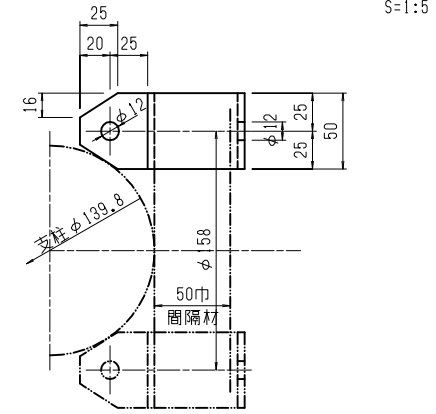
Z - Z 断面 S=1:2



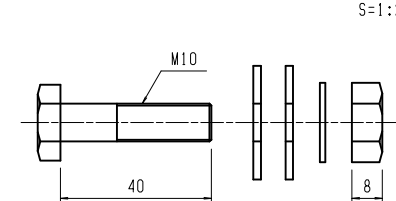
脚詳細図  
(溶融亜鉛メッキ) S=1:10



Asタイプ防眩板取付金具詳細 S=1:5



金具取付ボルト W.S W S=1:2



高規格道路  
(自専道)

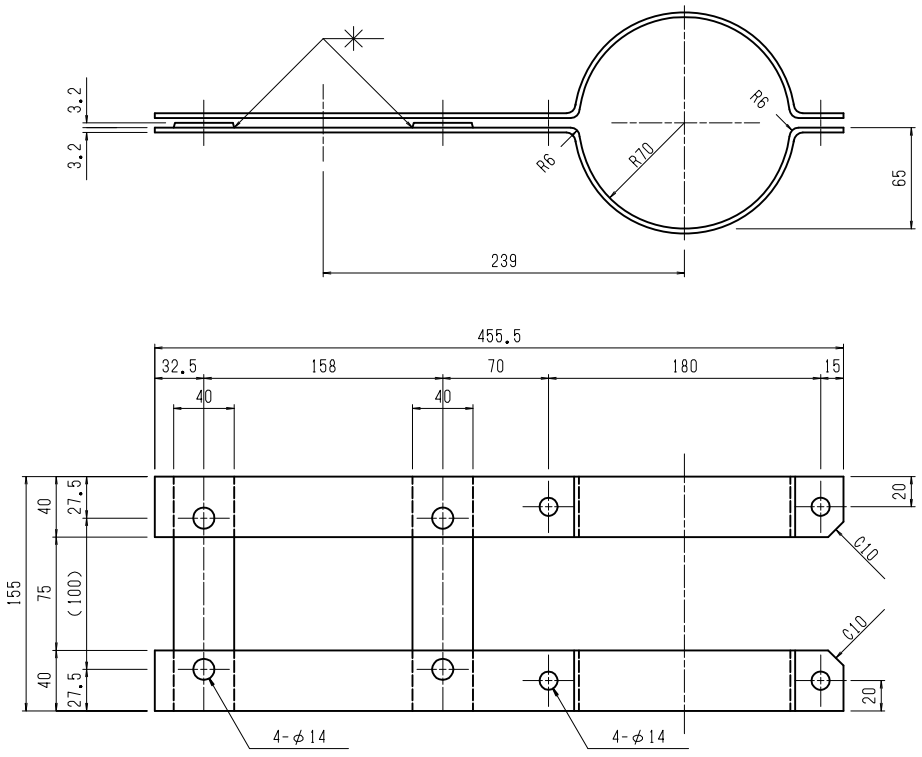
図面記号  
名称

Cs  
眩光防止板(橋梁部等)

単位：mm

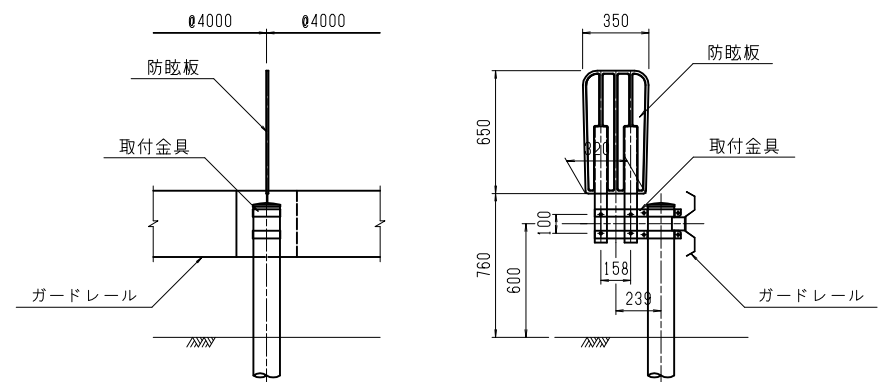
橋梁部防眩板取付金具詳細

S=1:5



取付概略図

S=1:40



取付B.N.W

S=1:2

