

# Disaster Prevention Information to Save Lives

The government and its citizens must work together to mitigate the damage caused by sediment-related disasters. Information on disasters is supplied by the government in a variety of ways. It's important to acquire information on disasters, prepare for them by checking for potentially dangerous places near your home and make sure you know both how and where to evacuate. Furthermore, be ready to evacuate as soon as possible when you are notified of dangerously heavy rainfall and other warning signs.

## Preparations

- Regularly check for information on sediment-related disasters.
- Check for potentially dangerous locations.
- Make sure you know how and where to evacuate and the proper route.
- Get to know your elderly neighbors and evacuate with them.

## Check for Potentially Dangerous Locations

Your local civil engineering or municipal office will have a hazard map on hand. Make sure you check regularly for potential disasters and know where to evacuate to.



Check a hazard map of your area

## Check the Internet

In Japan, the Ministry of Land, Infrastructure, Transport and Tourism and local government websites are a great source of information.

\*For the Ministry of Land, Infrastructure, Transport and Tourism's Disaster Information Center, go to <http://www.bosaijoho.go.jp/> and search for disaster information. You'll also find links to relevant local municipality and government agency home pages.



## Learn the Evacuation Route

Check your evacuation route regularly for any potentially dangerous areas.

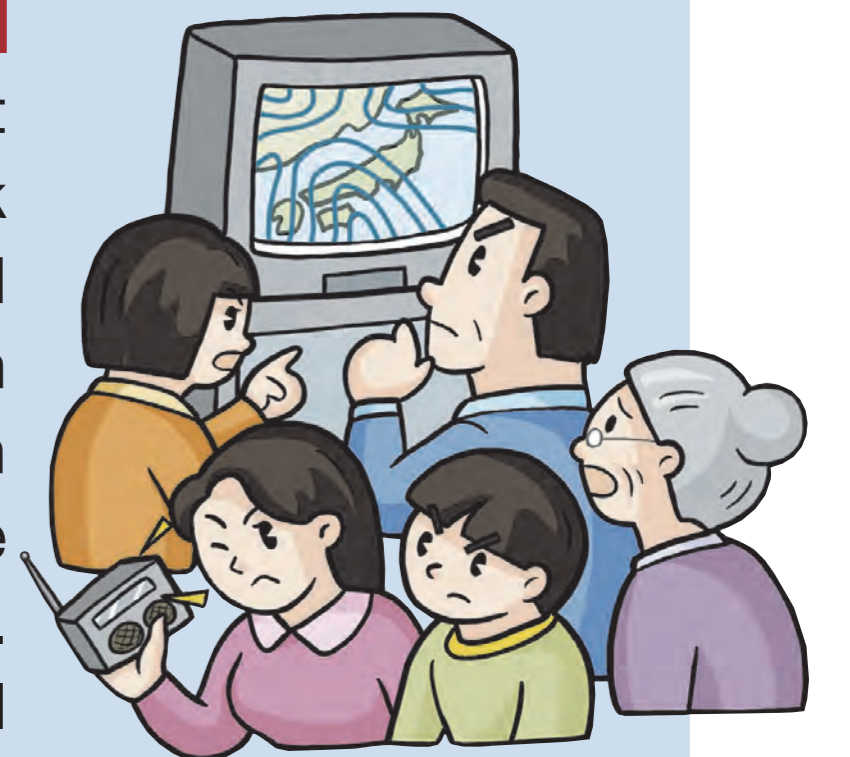


## Stay Alert for Information

Pay attention to the weather forecast and any information on sediment disasters.

## Sediment Disaster Warnings

If heavy rainfall heightens risk of a sediment disaster, your local government officials work together to alert citizens in the affected areas. This information is publicized by both the prefectural government and the Japan Meteorological Agency to help citizens make informed decisions about evacuation. Information has been publicized by all prefectures since March, 2008.



## Prepare for Evacuation

Keep an emergency kit on hand in case you have to evacuate. Make sure to take your cell phone with you.



## Pay Attention to Rainfall

Sediment disasters are often caused by rain.

Be on the lookout for rainfall of more than 20 mm per hour or accumulation that exceeds 100 mm.



The Japan Meteorological Agency defines 20 to 29 mm per hour as intense rainfall to communicate downpour.