

HOKKAIDO CRUISES

Ports and Excursions

Production Hokkaido Regional Development Bureau
Ministry of Land, Infrastructure, Transport and Tourism
E-mail hkd-ky-kouwan@ml.mlit.go.jp
Tel. +81-11-709-2311

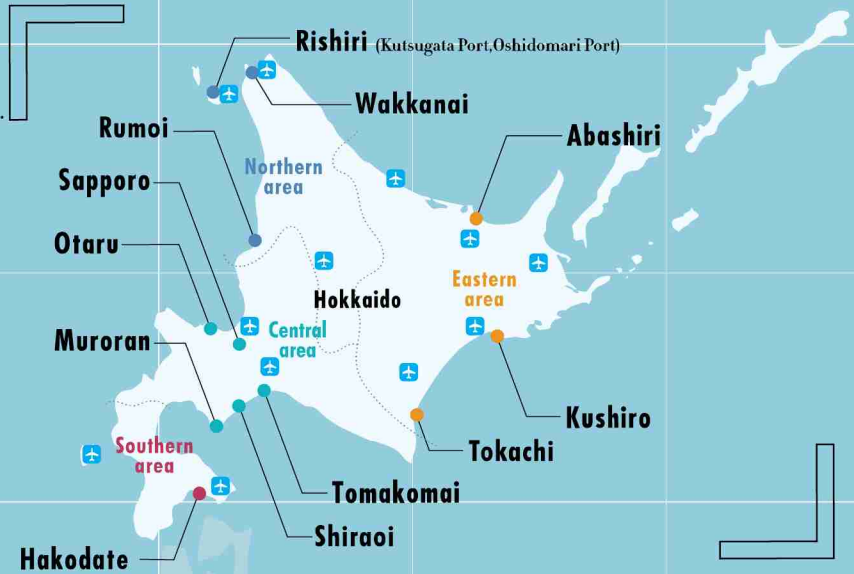


Cool Day 北海道
<http://www.visit-hokkaido.jp>
Hokkaido Tourism Organization

JAPAN

HOKKAIDO

Country Japan	Area 83,424.22 km ²	Total population 5,267,762(2020)
Density of population 64.8/km ²	Prefectural capital Sapporo	



- **Sapporo** The capital city of Hokkaido exhibiting different charms through all four seasons
- **Otaru** Experience the harsh, yet rich natural environment that nurtures the historic port city, and the strong undiluted whiskies
- **Muroran** Toya Caldera and Usu Volcano UNESCO Global Geopark (the living earth) and the location of a former G8 summit
- **Tomakomai** Learn about the culture of the Ainu people who live in harmony with nature
- **Shiraoi** "Symbolic Space for Ethnic Harmony", a platform intended to play a central role in promoting the national understanding of Ainu history, Ainu culture, etc. and reviving and developing Ainu culture, Opened in 2020.
- **Wakkanai** The northernmost city of Japan. The gateway to Rishiri and Rebun Islands and a popular sightseeing spot with a rich natural environment.
- **Rishiri** A remote island in Hokkaido with abundant fishery resources. Many people climb Mt. Rishiri (Rishirifuji), which is filled with alpine plants.
- **Rumoi** Boasts a thriving fishery processing industry and offers a gateway to Asahikawa from the sea.
- **Kushiro** Japanese cranes, the symbol of Japan and a special natural monument, and Kushiro Shitsugen National Park
- **Abashiri** Shiretoko World Natural Heritage site and wild animals viewed from the sea
- **Tokachi** Pastoral scenery and plains that enable you to experience the feel of Hokkaido; many tourists visit during all four seasons.
- **Hakodate** Stroll around the romantic city with its atmosphere of modern Japan



Contact Association for the Promotion of Cruises to Hokkaido
 E-mail hok-kaijishinkou@hkt.mlit.go.jp
 Tel +81-11-290-1011

リサイクル適性 (A)
 この印刷物は、印刷用の紙へリサイクルできます。

Otaru

Population: 114,000

Tourist information: <http://otaru.gr.jp/>



Otaru Canal



Nikka Whisky Yoichi Distillery

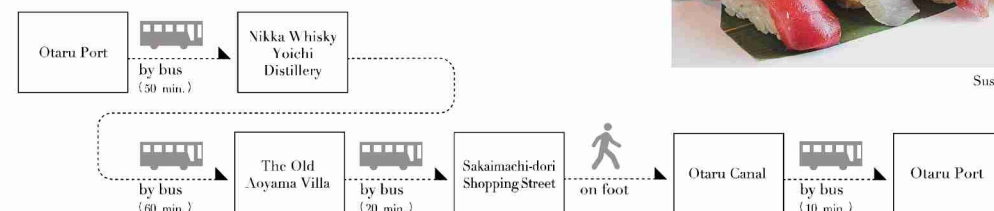


Rickshaw

Popular excursion

Otaru townscape and the Nikka Whisky Yoichi Distillery

[Required time: 7.5 hours]



Sushi

Outline

	Less than 60,000 GT	60,000 GT and over
Wharf	No. 3 Wharf Nos. 13 & 14 quays	Katsunai Wharf Nos. 2 & 3 quays
Length	344 m (two berths side by side)	370 m (two berths side by side)
Water depth	-9.0 m	-10.0 m
Fender energy absorption (number of fenders)	Max. 138 kN·m (29)	265 · 285 kN·m (19)
Bitt (number of bitts)	1,500 kN (1), 500 kN (9), 350 kN (5)	1,500 kN (3), 1,000 kN (7), 500kN (6)
Parking capacity	10 buses	50 buses
Access	<ul style="list-style-type: none"> •5 min. walk to the downtown area •15 min. walk to JR Otaru station 	<ul style="list-style-type: none"> •20 min. walk to JR Otaru Chikko station
Vessels that had previously called at the port	Crystal Symphony and others	Diamond Princess and others
Other remarks	<ul style="list-style-type: none"> •Equipped with mobile Wi-Fi •Foreign money exchange close to the port •Close to popular strolling areas 	<ul style="list-style-type: none"> •Equipped with mobile Wi-Fi •Temporary Tourist information center, souvenir shops (English and Chinese speakers)



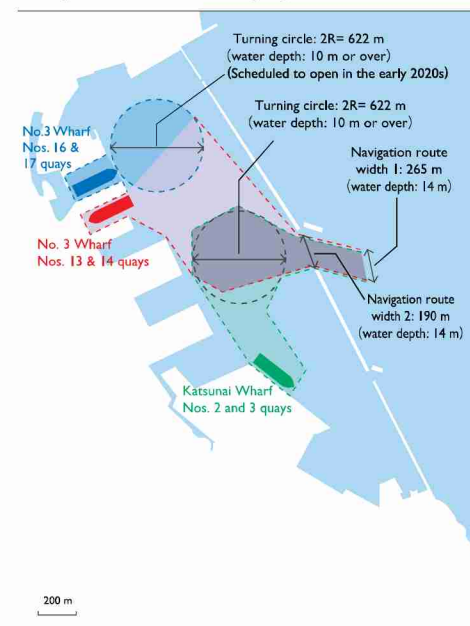
Otaru Port

Contact Port Office, Industry-Port and Harbor Department, City of Otaru

Tel. +81-134-23-1107

E-mail kowan@city.otaru.lg.jp

Navigation route to the quay



Quay detail (No. 3 Wharf, Nos. 13 and 14 quays)

Fender	500 mm (H) x 2,500 mm (L)	☺
Distance between fenders	6.6 - 15.0 m	↗
Bitt	350 kN / 500 kN	● / ●
Distance between bitts	15.0 - 30.2 m	↗
Mooring post	500 kN / 1,500 kN	⊙ / ⊙

Quay detail (Katsunai Wharf Nos. 2 and 3 quays)

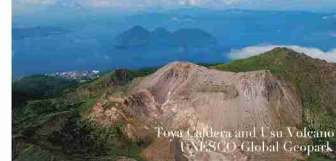
Fender	400 mm (H) x 2,500 mm (L)	☺
Distance between fenders	10.8 - 21.6 m	↗
Bitt	500 kN / 1,000 kN	● / ●
Distance between bitts	11.3 - 32.2 m	↗
Mooring post	1000 kN / 1,500 kN	⊙ / ⊙

No. 3 Wharf, Nos. 16 and 17 quays (Scheduled to open in the early 2020s)

Muroran

Population: 83,000

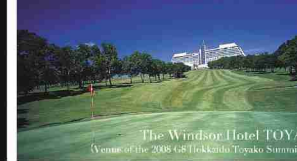
Tourist information: <http://muro-kanko.com>



Toya Caldera and Usu Volcano UNESCO Global Geopark



Noboribetsu Oni and Deities Fireworks



The Windsor Hotel TOYA (Venue of the 2008 G8 Tokkaido Toyako Summit)

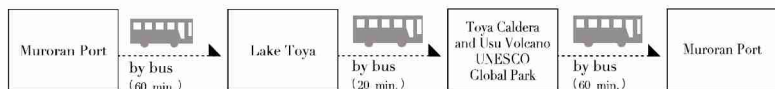


Lake Toya

Popular excursion

Lake Toya lakeside and the Toya Caldera and Usu Volcano UNESCO Global Geopark

[Required time: 7.5 hours]



Nearby attractions

Tokkarisho



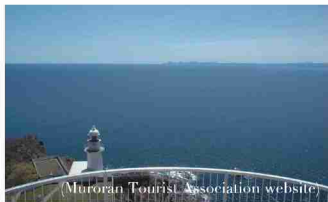
(Muroran Tourist Association website)

Kuma bamboo grass covering the approximately 100-meter high steep cliffs is spread out like a carpet. The blue of the ocean and the green of the bamboo grass accentuate the gray cliff to create a superb view. The origin of the name Tokkarisho is "Tokaru Isho" (seal rock) in the Ainu language.

ACCESS

Approx. 20 min. by car

Cape Chikyū



(Muroran Tourist Association website)

It is one of the most scenic spots in Japan, with its serial approximately 100-meter high steep cliffs and an observatory commanding a panoramic view of the Pacific Ocean on sunny days.

ACCESS

Approx. 20 min. by car

Zuisen Japanese Sword Smithy



(Muroran City website)

Since the smithy was established at the Muroran plant of Japan Steel Works in 1918, Japanese sword forging techniques have been passed on continuously for over 100 years.

ACCESS

Approx. 15 min. by car



Muroran Port

Contact Ports Section, City of Muroran

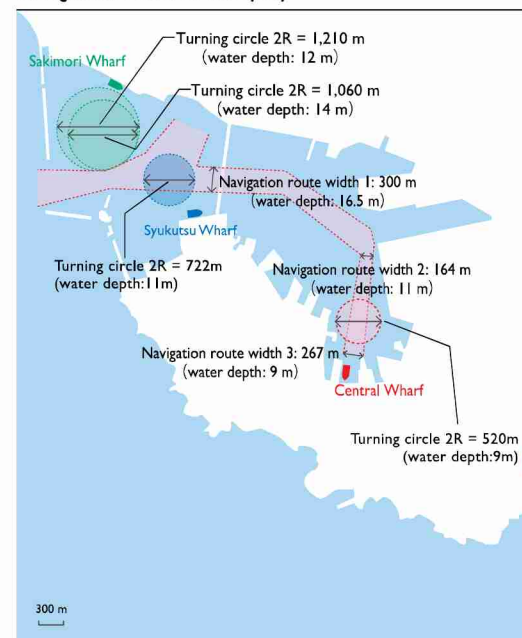
Tel. +81-143-22-3191

E-mail kouwan-ken@city.muroran.lg.jp

Outline

	Less than 77,000 GT	77,000 GT or over
Wharf	Central Wharf cruise ship berth	Sakimori Wharf
Length	241 m	520 m (two berths side by side)
Water depth	-9.0 m	-12.0 m ~ -14.0m
Fender energy absorption (number of fenders)	121.2 kN·m (20)	379kN·m (22), 152kN·m(3)
Bitt (number of bitts)	1,500 kN (2), 1,000 kN (15)	1,500 kN (6), 1,000 kN (11)
Parking capacity	30 buses, 10 taxis	120 buses ,20 taxis
Access	<ul style="list-style-type: none"> • 15 min. walk to the downtown area • 10 min. walk to the closest train station 	<ul style="list-style-type: none"> • 15 min. by bus to the downtown area • 15 min. by bus to the closest train station
Vessels that had previously called at the port	Sun Princess and others	Quantum of the Seas and others
Other remarks	<ul style="list-style-type: none"> • Close to the downtown area • Banks located close to the port. Wi-Fi • Good access to public transportation to allow strolling in the city 	<ul style="list-style-type: none"> • Loop bus service available • 10 min. to an expressway entrance • Mobile Wi-Fi can be arranged.

Navigation route to the quay



Quay detail (Sakimori Wharf)

Fender	1,370 mm (H) x 1,370 mm (L) (standard) / 1,350 mm (H) x 2,500 mm (L) (foam filled type)	↪ ↻ ↻
Distance between fenders	15.0 m	↗ ↘
Bitt	700 - 1,000 kN	●
Distance between bitts	27.0 m	↗ ↘
Mooring post	1,500 kN	⊙

Quay detail (Central Wharf)

Fender	600 mm (H) x 1,200 mm (L)	↪ ↻
Distance between fenders	12.5 m	↗ ↘
Bitt	1,000 kN	●
Distance between bitts	20.0 m	↗ ↘
Mooring post	1,500 kN	⊙

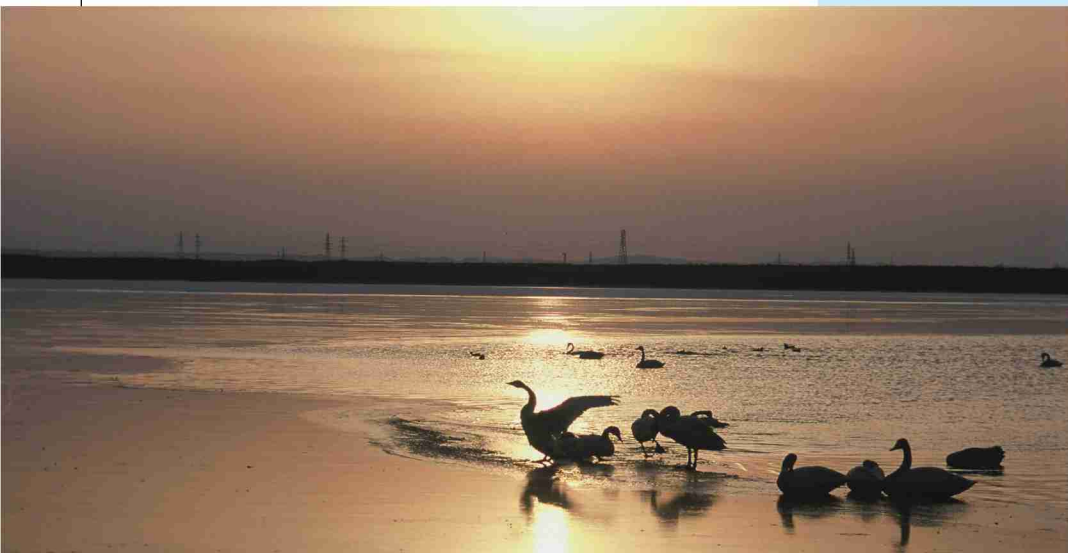
Quay detail (Syukutsu Wharf) (Scheduled to open in the early 2020s)

Fender	-	↪ ↻ ↻
Distance between fenders	13.0m	↗ ↘
Bitt	500 kN(9), 2,000 kN(5)	●
Distance between bitts	25.0 m	↗ ↘
Mooring post	2,000 kN	⊙

Tomakomai

Population: 171,000

Tourist information: http://www.hokkou-p.com/ebook/t_kankoukyoukai_toma-guide_e/



Migratory birds at Lake Utonai



New Chitose Airport Air gateway to Hokkaido

<http://www.new-chitose-airport.jp/en/>



Flights & cruises in Hokkaido

Port name	Airport	Time from the port
MURORAN	New Chitose Airport	75min.
TOMAKOMAI	New Chitose Airport	35min.
WAKKANAI	Asahikawa Airport	260min.
HAKODATE	Hakodate Airport	40min.
OTARU	New Chitose Airport	70min.
KUSHIRO	Kushiro Airport	30min.
RUMOI	Asahikawa Airport	120min.
ABASHIRI	Kushiro Airport	160min.
SHIRAOI	New Chitose Airport	45min.

Outline



	Less than 27,000 GT	27,000 GT or over
Wharf	North Wharf	Irifune Wharf
Length	260 m (two berths side by side)	330 m
Water depth	-7.5 m	-14.0 m
Fender energy absorption (number of fenders)	124 kN·m (34)	426 kN·m (23)
Bitt (number of bitts)	1,000 kN (16)	1,500 kN (2), 1,000 kN (10)
Parking capacity	20 buses, 15 taxis	50 buses, 20 taxis
Access	•10 min. by taxi to the downtown area	•10 min. by taxi to the downtown area
Vessels that had previously called at the port	Nippon Maru, Pacific Venus and others	Asuka II and others
Other remarks	<ul style="list-style-type: none"> •The quay blends with a huge, luscious green and romantic park. •Comfortable natural environment with cool summers and low winter snowfall •Popular tourist destinations and a golf course located close to the port, providing opportunities to fully enjoy recreational activities •Industrial tourism is also an attraction in Tomakomai, where various industries have accumulated. •Agriculture and fisheries are also active in Tomakomai. Grommet food with abundant local ingredients can be enjoyed. •10 min. by car to the train station, the downtown area and a shopping mall •One hour by car to Sapporo, 30 min. by car to New Chitose Airport •Direct access to urban arterial roads. Transportation systems, including expressways and JR trains, are well-organized, providing easy access to other areas. 	<ul style="list-style-type: none"> •Easy access to the port with its nearby port mouth, and commercial facilities in the adjoining ferry terminal, which is used by approximately 700,000 passengers annually.

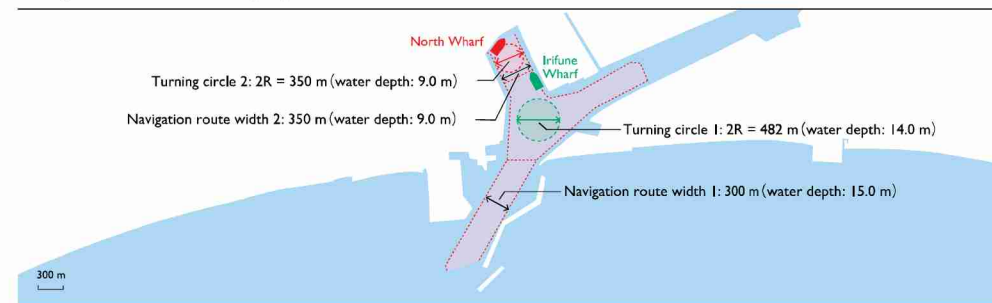
Tomakomai Port

Contact Tomakomai Port Authority

Tel. +81-144-34-5905

E-mail ac06sinkou@jptnk.com

Navigation route to the quay



Quay detail (North Wharf)

Fender	600 mm (H) x 1,400 mm (L)	⤿
Distance between fenders	7.5 m	↗
Bitt	1,000 kN	●
Distance between bitts	19.0 m	↘
Mooring post	1,000 kN	⊙

Quay detail (Irifune Wharf)

Fender	1,000 mm (H) x 1,500 mm (L)	⤿
Distance between fenders	15.0 m	↗
Bitt	1,000 kN	●
Distance between bitts	35.0 m	↘
Mooring post	1,500 kN	⊙

Shiraoi

Population: 16,600

Tourist information: <http://www.town.shiraoi.hokkaido.jp/>



The Foundation for Ainu Culture

National Ainu Museum and Park (Upopoy)

Nearby attractions

National Ainu Museum and Park (Upopoy)



As a national center to learn about and convey Ainu history and culture, it hands down and shares Ainu culture, which has been shaped by its long history and nature, taking various aspects into consideration. It also serves as a symbol of a society where different peoples can respect and coexist with each other, with the necessary facilities that can allow people of all ages from Japan and abroad to learn about the Ainu view of the world and nature.

ACCESS

Approx. 10 min. via Route 36 by car

National Ainu Museum



The National Ainu Museum was established to achieve a society that respects the pride of the Ainu, to convey the Ainu history and culture to many people and to hand down Ainu culture to future generations. Exhibits are displayed from the viewpoint of the Ainu.

ACCESS

Approx. 10 min. via Route 36 by car
Inside National Ainu Museum and Park (Upopoy)



Shiraoi Port

Contact Port Office, Economy Promotion Division, Town of Shiraoi

Tel. +81-144-84-2200

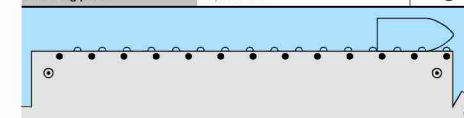
E-mail kouwan@town.shiraoi.hokkaido.jp

Outline

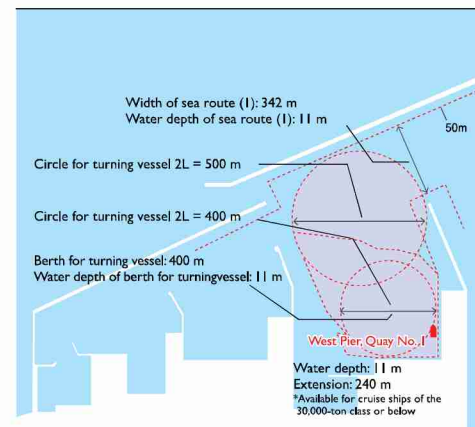
	Less than 30,000 ton class
Wharf	West Pier, Quay No. 1
Length	240 m
Water depth	-11 m
Fender energy absorption (number of fenders)	485 KN·m (16)
Bitt (number of bitts)	Vertical bitt: 1,500 KN (2) (1 for breakwater) Curved bitt: 1,000 KN (13)
Parking capacity	15 buses and 10 taxis
Access	10 minutes from Shiraoi Station and Shiraoi downtown
Vessels that had previously called at the port	Pacific Venus (Visited on May 10, 2017)
Other remarks	The hotel is scheduled to open in 2022 next to Upopoy

Quay detail (West Pier, Quay No. 1)

Fender	600 II×3,500 L	⤿
Distance between fenders	15 m	↗
Bitt	1,000 KN	●
Distance between bitts	20 m	↘
Mooring post	1,500 KN	⊙



Navigation route to the quay



Thoroughbred Horse

Wakkanai

Population: 33,600

Tourist information: <http://www.city.wakkanai.hokkaido.jp/>



Rolling Soya Hills "White Paths"

Nearby attractions

La Pérouse Memorial Monument



In October 2007, 220 years after the explorer La Pérouse was the first European to pass through the Soya Strait, a monument designed to resemble ship sails was erected on an elevated spot overlooking the strait at Cape Soya, by the Japanese-French Executive Committee for the Establishment of the La Pérouse Memorial Monument.

ACCESS

Approx. 40 min. via Route 238 by car

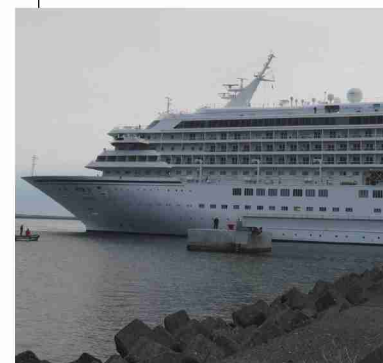
Periglacial landform of the Soya hills



Beautiful periglacial landform that originated in the Würm Glacial Age, the earth's last glacial period of around 10,000 to 20,000 years ago, can still be seen intact.

ACCESS

Approx. 40 min. via Route 238 by car



Wakkanai Port

Contact Facility Management Group,
Logistics and Port Division,
Construction Industry Department,
City of Wakkanai

Tel. +81-162-23-6483

E-mail kouwan@city.wakkanai.lg.jp

Outline

	100,000 GT class	Less than 10,000 GT class
Wharf	Suehiro Pier, East Quay April 1, 2018 -	Tenpoku Pier No. 1, North Quay
Length	240m +105m(Dolphin)	185m
Water depth	-10m	-10m
Fender energy absorption (number of fenders)	213kN*m/19	92.3kN*m/8
Bit (number of bits)	700kN/10-1000kN/2-2000kN/4	250kN/8 1000kN/2
Parking capacity	50 buses and 50 taxis	20 buses and 20 taxis
Access	•Ten minutes from Wakkanai Station by car •Ten minutes from Remote Island Ferry Terminal by car	•Ten minutes from Wakkanai Station by car •Ten minutes from Remote Island Ferry Terminal by car
Vessels that had previously called at the port	Asuka II Diamond Princess (Scheduled to visit the port after April 1, 2018)	Nipponmaru Pacific Venus
Other remarks	Wi-Fi environment (Scheduled to be available after June 2018) The tourist information center etc. will open when a vessel visits the port	

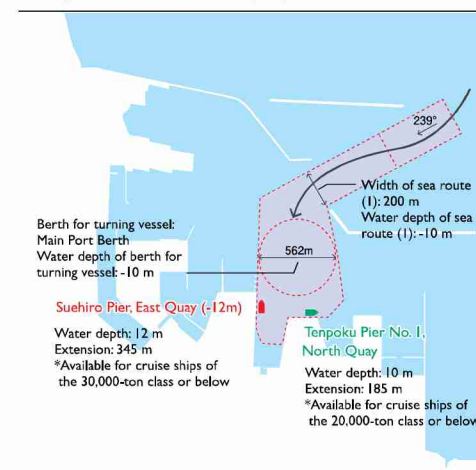
Quay detail (Suehiro Pier, East Quay)

Fender	High-performance V type-800H*1200L	☺
Distance between fenders	12m	↗
Bit	700kN	●
Distance between bits	24m	↗
Mooring post	1000kN / 2,000kN	☉ / ☺

Quay detail (Tenpoku Pier No. 1, North Quay)

Wharf	Tenpoku Pier No. 1, North Quay 800H * 1200L	↗
Length	185m	↗
Water depth	-10m	↗
Fender	V type 500H×1500L	☺
Fender energy absorption (number of fenders)	92.3kN*m/15	↗
Bit (number of bits)	250kN/8 (Curved bit) / 1000kN/2 (Vertical bit)	● / ●
Distance between bits	12m	↗
Distance between fenders	24m	↗

Navigation route to the quay



Rishiri Island

Population: 4,400

Tourist information: (Rishiri) : <http://www.town.rishiri.hokkaido.jp/kanko/>
 (Rishirifuji) : <http://www.town.rishirifuji.hokkaido.jp/rishirifuji/1394.htm>



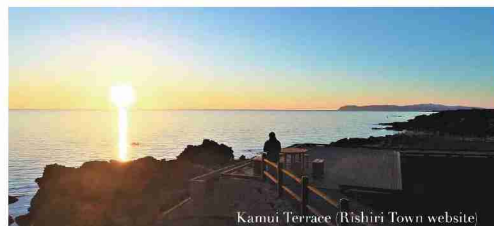
Kutsugata Port



Rishiri-Relm-Sarobetsu National Park



Oshidomari Port



Kamui Terrace (Rishiri Town website)



Sea urchin shelling experience (Rishiri Town website)

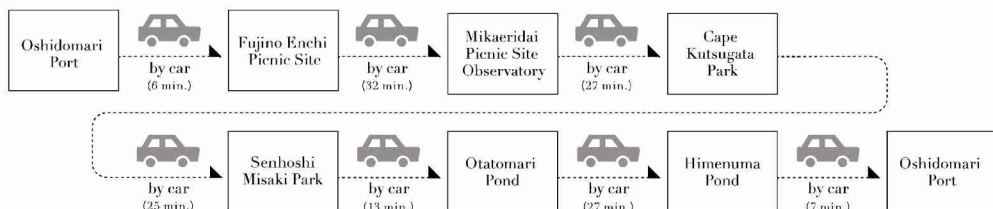


Rishiri-island

Popular excursion

Travel course around the island with the great Mt. Rishiri at its center. You can enjoy viewing a beautiful lake, strange-shaped rocks, capes and monuments between the mountain and the coast.

[Required time: 5 hours]



Kutsugata Port

Contact Town Environment Improvement Division, Town of Rishiri

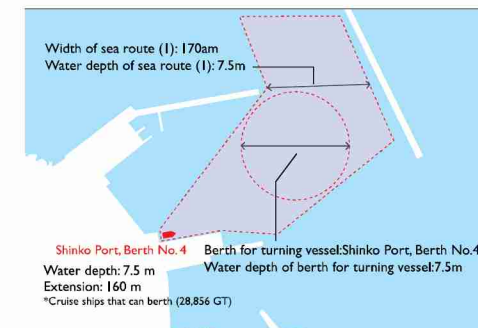
Tel. +81-163-84-2345

E-mail kouwan@town.rishiri.hokkaido.jp

Outline

	Less than 28,856 GT class
Wharf	Shinko Port, Quay No. 4
Length	225.07 m (including mounting part) 160.06 m (not including mounting part)
Water depth	7.5m
Fender energy absorption (number of fenders)	47/0kN・m (25)
Bitt (number of bitts)	350kN (9), 1,000kN (2), 1,500kN (4)
Parking capacity	5 buses and 10 taxis
Access	10 minutes on foot
Vessels that had previously called at the port	Pacific Venus (26,594 GT) Nipponmaru (22,472 GT)
Other remarks	The town has an exhibition of products at the quay and issues premium tourist tickets specially for cruise ship passengers.

Navigation route to the quay



Quay detail (Shinko Port, Berth No. 4)

Fender	400Hx1,200L	
Distance between fenders	5.0m	
Bitt	350kN / 1,000kN	
Distance between bitts	15.0m	
Mooring post	1,500kN	

Oshidomari Port

Contact Industry Promotion Division, Town of Rishirifuji

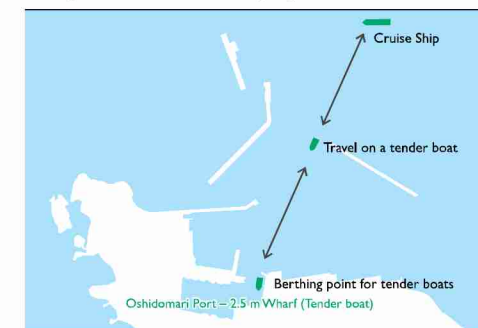
Tel. +81-0163-82-1111

E-mail suisan@town.rishirifuji.hokkaido.jp

Outline

	Open sea anchorage only.
Wharf	Oshidomari Port -2.5 m Wharf (Tender boat)
Length	74.03 m
Water depth	2.5 m
Fender energy absorption (number of fenders)	-
Bitt (number of bitts)	-
Parking capacity	-
Access	Approx. 1 minute from the ferry terminal on foot, Approx. 10 minutes from downtown on foot
Vessels that had previously called at the port	Asuka II (50,142GT) Nipponmaru (22,472GT)
Other remarks	There is a ferry terminal very close to the berthing point for tender boats, where computers (for a fee) and Wi-Fi are available. The tourist information center is open in the ferry terminal (during summer only).

Navigation route to the quay



Wild Seal

Rumoi

Population: 20,700

Tourist information: <http://rumoi-rasisa.jp/>



Cape Ogoina Seaside Park

Nearby attractions

Asahiyama Zoo



The very popular northernmost zoo of Japan visited by many tourists from Japan and around the world. The zoo became very famous for its "behavioral exhibition" that enables you to watch animals live and behave as usual.

ACCESS

Approx. 1 hour and 45 minutes via Fukagawa-Rumoi Expressway (free section) and Hokkaido Expressway by car

Furano



Famous for lavender fields commanding a distant view of Mt. Tokachidake. Many tourists visit in July, the best season for lavender.

ACCESS

Approx. 2 hours and 10 minutes via Fukagawa-Rumoi Expressway (free section) and Route 38 by car

Biei



Photography spot, a scenic hillside filled with fields and pastures. There are famous sightseeing spots such as the "Patchwork Road" and "Seven Stars Tree".

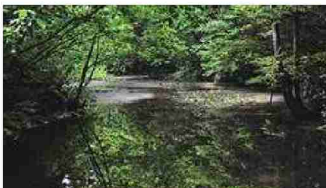
ACCESS

Approx. 2 hours via Fukagawa-Rumoi Expressway (free section) and Route 12 etc. by car

Teuri Island



Yagishiri Island



Teuri Island is a paradise of sea birds like the common murre (an endangered species) and the rhinoceros auklet. It is a rare island in the world in that sea birds and humans live symbiotically with each other. Primeval forests cover a third of Yagishiri Island, where alpine plants and native flowers bloom and many wild birds play and rest their wings.

ACCESS

Approx. 60 min. via National Route 232 by car to Haboro Port and then 60 min. by ferry



Historic Buildings in Mashike Town

Rumoi Port

Contact Port Promotion Office, Economy and Port Division, Regional Development Department, City of Rumoi

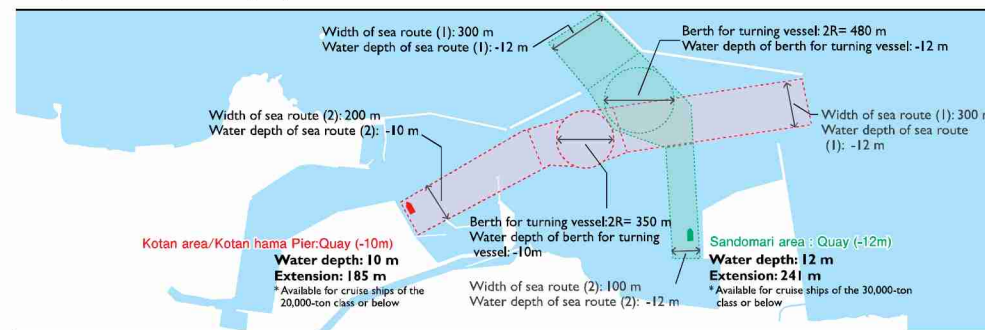
Tel. 81-164-42-1840

E-mail koutwan@e-rumoi.jp

Outline

	Maximum 15,000DWT	Maximum 30,000DWT
Wharf	Kotana hama Pier:Quay (-10 m)	Sandomari area:Quay (-12 m)
Length	185 m	241 m
Water depth	-10.0 m	-12.0 m
Fender energy absorption (number of fenders)	104 kN·m(17)	251 kN·m(18)
Bitt (number of bitts)	250 kN(2), 500 kN(10), 1,000 kN(2)	700 kN(12), 1,000 kN(2)
Parking capacity	10 buses and 30 taxis	15 buses and 40 taxis
Access	•10 minutes from Rumoi downtown by taxi •10 minutes from Rumoi Station by taxi	•15 minutes from Rumoi downtown by taxi •15 minutes from Rumoi Station by taxi
Vessels that had previously called at the port	Nipponmaru etc.	Asuka II
Other remarks	—	—

Navigation route to the quay



Quay detail (Kotana hama Pier : Quay -10m)

Fender	400×2,500	☺
Distance between fenders	11 m	↗
Bitt	250 kN / 500 kN	●
Distance between bitts	22 m	↘
Mooring post	1,000 kN	⊙

Quay detail (Sandomari area : Quay -12m)

Fender	800×1,600	☺
Distance between fenders	13 m	↗
Bitt	700 kN	●
Distance between bitts	20 m	↘
Mooring post	1,000 kN	⊙

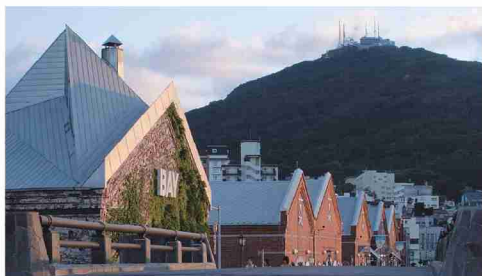
Hakodate

Population: 253,000

Tourist information: <https://www.hakodate.travel/en/>



Goryokaku Park



Historical red-brick warehouses

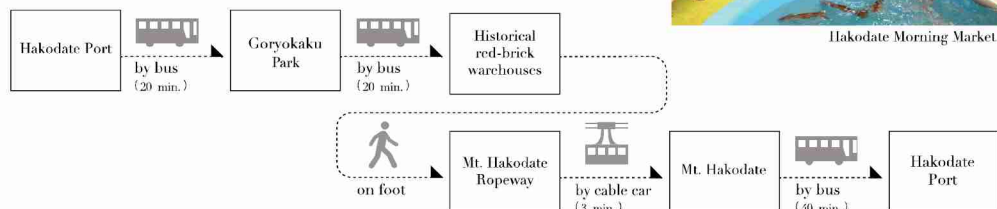


The view from Mt. Hakodate

Popular excursion

From natural scenery and hot-spring spas to historic city scapes and a priceless cultural heritage, Hakodate is richly and blessed with tourist attractions.

[Required time: 6 hours]



Hakodate Morning Market



Hakodate Port

Contact Port & Airport Department, City of Hakodate
Tel. +81-138-21-3493
E-mail port-dev@city.hakodate.hokkaido.jp

Outline

	Less than 30,000 GT	Less than 90,000 GT	90,000 GT and over
Wharf	Nishi Wharf	Wakamatsu Wharf	Minato-cho Wharf
Length	119 m	360 m	A 280 m • B 240 m (Consecutive berths)
Water depth	-9 m	-9 m(-10m)	A -14 m • B -12 m
Fender energy absorption (number of fenders)	119 kN·m (11)	283 kN·m(12)	A 338 kN·m (19) B 216 kN·m(19)
Bit (number of bits)	250 - 350 kN (16)	Jetty : 1,000 kN·(12) Dolphin : 1,500 kN·(4)	1,000 kN (10) 700 kN (10)
Parking capacity	50 buses	50buses (70buses*)	over 100 buses
Access	• 5 min. walk to the closest tram stop • 10 min. by tram to the downtown area	• A few min.walk to "JR Hakodate sta.(transportation hub)" • Easy access to surrounding areas by train or bus.	• 20 min. by shuttle bus or taxi to the downtown area
Vessels that had previously called at the port	Silver Shadow and others	Silver Muse and others	Quantum of the Seas and others
Other remarks	Close to popular strolling areas	• Close to popular strolling areas like "Hakodate Morning Market". • Cruise terminal is scheduled to open in 2022.	The berth continues to the quay wall (length: 240 m, water depth: 12 m)

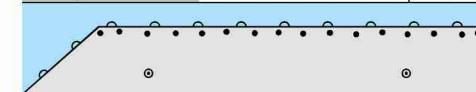
*After full service starts (in 2022)

Quay detail (Minato-cho Wharf)

Fender	1,000 mm (H) x 1,050 mm (L)	↷
Distance between fenders	12.5 - 15 m	↘ ↗
Bit	1,000 kN / 700 kN	● / ●
Distance between bits	25 - 30.0 m	↘ ↗
Mooring post	2,000 kN / 1,500 kN / 1,000 kN	⊙ / ⊙ / ⊙

Quay detail (Nishi Wharf)

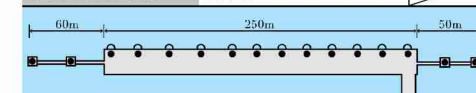
Fender	600 mm (H) x 1,500 mm (L)	↷
Distance between fenders	6.8 - 20 m	↘ ↗
Bit	250 - 350 kN	●
Distance between bits	9.4 - 14.5 m	↘ ↗
Mooring post	700 kN	⊙



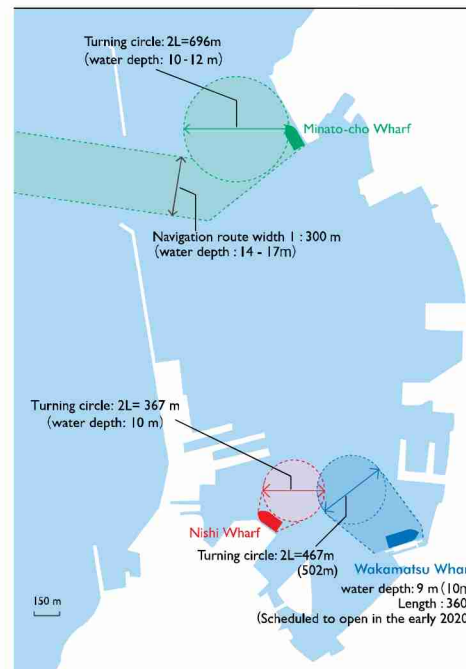
Quay detail (Wakamatsu Wharf, in provisional service)

※ Scheduled to open in the early 2020s

Fender	800mm (H) x 2,000 mm(L)	↷
Distance between fenders	20-25m	↘ ↗
Bit	1,000 kN • 1,500 kN	●
Distance between bits	20-30m	↘ ↗



Navigation route to the quay



Tokachi Area

Population: 337,000

Tourist information: <http://www.town.hiroo.lg.jp/>



Naitai Plateau Ranch



Shiehiku Garden



Banei Tokachi

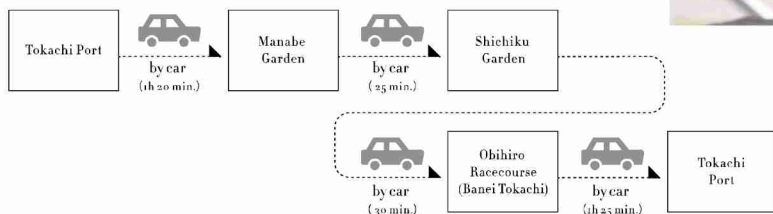


Dairy product of Tokachi

Popular excursion

Sightseeing course, viewing spots and gardens representative of Tokachi.

[Required time: 6 hours]



Tokachi Port

Contact Port Division, Town of Hiroo

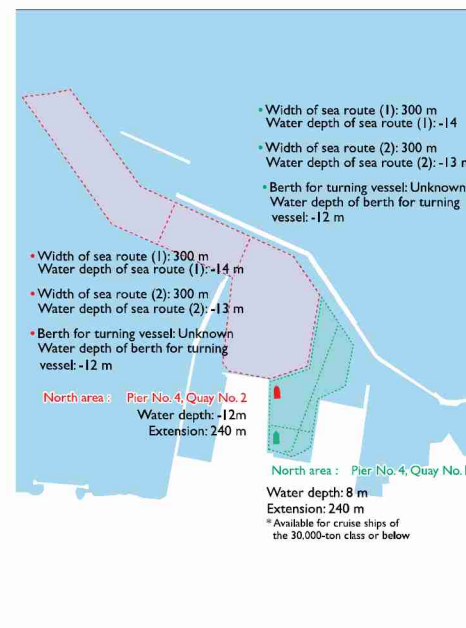
Tel. +81-1558-2-0185

E-mail k-shinko@town.hiroo.lg.jp

Outline

	Less than 30,000 ton class	Less than 50,000 ton class
Wharf	North area Pier No. 4, Quay No. 1	North area Pier No. 4, Quay No. 2
Length	North area 240 m	240 m
Water depth	-8 m	-12 m
Fender energy absorption (number of fenders)	Unknown (16)	14.4 t or above (20)
Bitt (number of bitts)	500kN/ (8)・1000kN/ (5)	700kN type (10), 1,000kN type (2)
Parking capacity	20 buses and 100 taxis	20 buses and 100 taxis
Access	•10 minutes to Hiroo downtown by taxi •2 hours and 30 minutes to Obihiro Station by route bus	•10 minutes to Hiroo downtown by taxi •2 hours and 30 minutes to Obihiro Station by route bus
Vessels that had previously called at the port	•Nipponmaru •Pacific Venus	Asuka II
Other remarks	Important port with "Tokachi", one of Japan's biggest food bases, as a hinterland. Tokachi Port is designated for the formulation of a multifunctional port space, seeking to strengthen logistics functions such as starting new sea routes for roll-on/roll-off ships.	

Navigation route to the quay



Quay detail (North area : Pier No. 4, Quay No. 1)

Fender	600H・1400L	☺
Distance between fenders	14.0m	↘
Bitt	500kN	●
Distance between bitts	25.3m	↗
Mooring post	1000kN	⊙

Quay detail (North area : Pier No. 4, Quay No. 2)

Fender	800H・1700L	☺
Distance between fenders	12.6m	↘
Bitt	700kN	●
Distance between bitts	25.3m	↗
Mooring post	1000kN	⊙

Abashiri

Population: 35,000

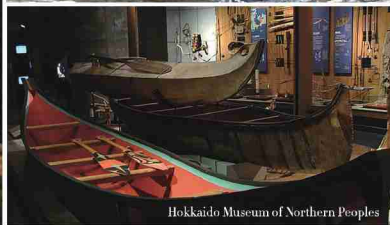
Tourist information: <http://abashiri.jp/tabnavi/en/index.html>



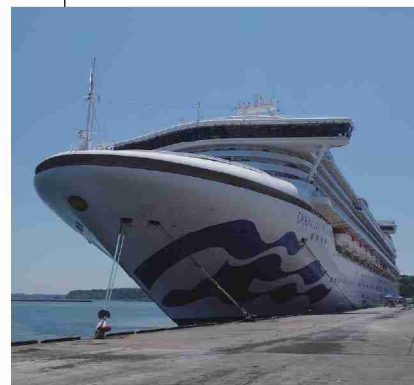
The Shiretoko Volcanic Group



Woods bear



Hokkaido Museum of Northern Peoples



Outline

	Less than 143,000 GT
Wharf	No. 4 Wharf
Length	425 m (two berths side by side)
Water depth	-10.0m ~ -12.0m
Fender energy absorption (number of fenders)	132 kN·m (35)
Bitt (number of bitts)	1,500 kN (2), 1,000 kN (2), 700 kN (11), 500 kN (9)
Parking capacity	50 buses, 30 taxis
Access	<ul style="list-style-type: none"> • 10 min. walk to the downtown area • 10 min. by taxi to the closest train station
Vessels that had previously called at the port	Royal Princess Class others
Other remarks	<ul style="list-style-type: none"> • Tourist Information Desk on the quay (English and Chinese speakers) • Special (Nopaid) bus service to the downtown area.

Abashiri Port

Contact Fisheries and Port Department, City of Abashiri

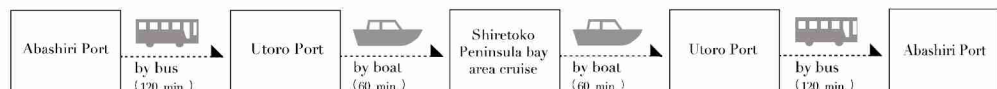
Tel. +81-152-44-6111

E-mail ZUSR-KW-KOWAN @city.abashiri.hokkaido.jp

Popular excursion

Shiretoko Peninsula, World Natural Heritage Site Cruise

[Required time: 6 hours]



Nearby attractions

Abashiri Prison Museum



This museum on the hillside of Mt. Tendo preserves and exhibits the relocated and reproduced buildings of Abashiri Prison. There are eight buildings in two locations - the prison houses, central guard house, administration building, a lecture hall and Futamigaoka Branch that have been designated as important national properties in February 2016.

ACCESS

Approx. 15 minutes via Prefectural Route 490 by car

Okhotsk Ryu-hyo Museum



It is a tourist facility themed on drift ice and creatures in the Sea of Okhotsk. At the drift ice terrace, 100 ton of real drift ice is exhibited at a temperature of -15° C. The observatory commands a magnificent view of the extensive Sea of Okhotsk, Lake Abashiri, Lake Notoro, Lake Tofutsu, Lake Mokoto and the Shiretoko mountains.

ACCESS

Approx. 12 minutes via Prefectural Route 490 by car

Shiretoko Peninsula

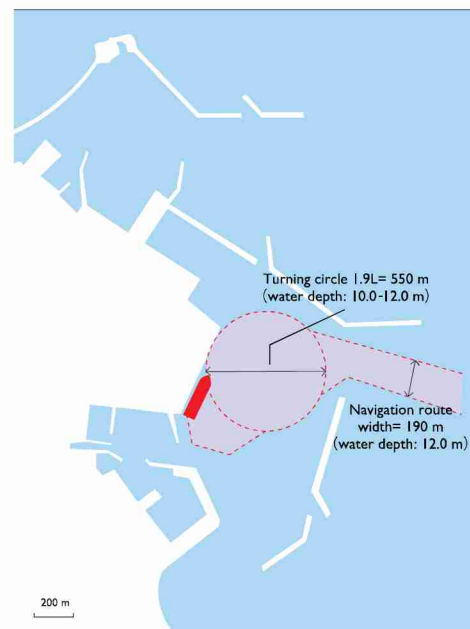


Shiretoko Peninsula located in eastern Hokkaido is a narrow peninsula projecting into the Sea of Okhotsk, with Cape Shiretoko at its tip. The peninsula has a number of popular tourist spots. With the Chishima volcanic belt running from Kamchatka and along the Kurils and Shiretoko Peninsula, there are also many high-quality hot springs, with a large hot spring resort in Utoro, which is a major sightseeing base in Shiretoko.

ACCESS

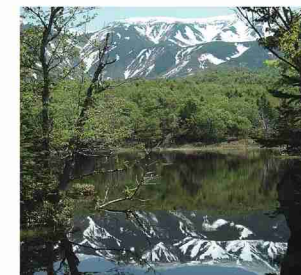
Approx. 90 minutes via Routes 224 and 334 by car

Navigation route to the quay



Quay detail

	No. 2 Quay	No. 1 Quay	
Fender	600 mm (H) x 3,000 mm (L)	600 mm (H) x 1,500 mm (L)	⤿
Distance between fenders	13.0 m	11.0 m	↘
Bitt	700 kN	500 kN	●
Distance between bitts	22.5 m	22.5 m	↗
Mooring post	1,500 kN	1,000 kN	⊙

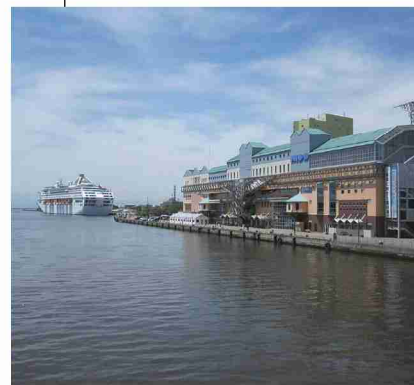


Shiretoko Goko Lakes (five lakes)

Kushiro

Population: 168,000

Tourist information: <http://en.kushiro-lakeakan.com/>



Outline

	Less than 77,000 GT	77,000 GT and over
Wharf	East Port Central Wharf	West Port No. 4 Wharf
Length	310 m	410 m (two berths side by side)
Water depth	- 9.0 m	-10.0 m
Fender energy absorption (number of fenders)	204 kN·m (31)	114 kN·m (15), 251 kN·m (16)
Bitt (number of bitts)	1,000 kN (14), 500 kN (9)	1,000 kN (2), 700 kN (12), 500 kN (8)
Parking capacity	10 buses, 30 taxis	20 buses, 50 taxis
Access	<ul style="list-style-type: none"> 5 min. walk to a popular commercial establishment 15 min. walk to the closest train station 	<ul style="list-style-type: none"> 20 min. by taxi to the downtown area 15 min. by taxi to the closest train station
Vessels that had previously called at the port	Sun Princess and others	Diamond Princess and others
Other remarks	<ul style="list-style-type: none"> 5 min. walk to the Kushiro Tourism and International Relations Center and a shopping mall (good for strolling) Equipped with free Wi-Fi Tourist Information Desk on the quay (English) 	<ul style="list-style-type: none"> Equipped with mobile Wi-Fi Tourist Information Desk on the quay (English)

Popular excursion

Japanese cranes and Kushiroshitsugen National Park

[Required time: 6 hours]



Kushiro Washo Market

Kushiro Port

Contact Fishery, Port and Airport Department, City of Kushiro

Tel. +81-154-53-3371

E-mail ko-kouwankuukou@city.kushiro.lg.jp

Nearby attractions

Kushiro Marsh



Accompanied by a guide familiar with Kushiro Marsh, you can row a canoe along the Kushiro River through the wetland. If you look at the wonder of this naturally formed wetland up close, you may encounter various indigenous animals of Hokkaido, such as the red-crowned crane (a protected species), white-tailed sea eagle and Ezo sika deer.

ACCESS

Approx. 90 minutes via Routes 391 by car to Toro

Kushiro Shitsugen Norokko Train



The Kushiro Shitsugen Norokko Train is a retro-looking scenic tourist train that runs leisurely through Kushiro Marsh. From the windows of the slow-moving train, you can enjoy a splendid natural view and observe the carefree wild animals.

Approx. 50 min. from Kushiro station to Toro station by train

ACCESS

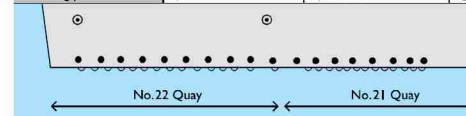
Approx. 5 minutes by car to Kushiro Station

Navigation route to the quay



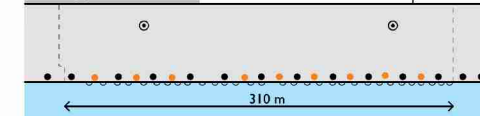
Quay detail (West Port No. 4 Wharf Nos. 21 and 22 quays)

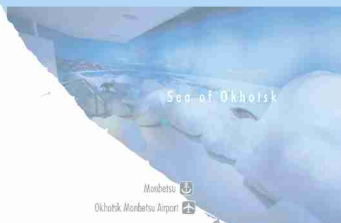
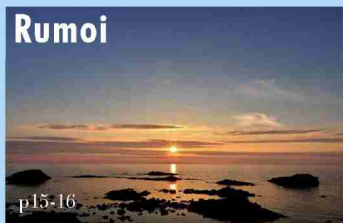
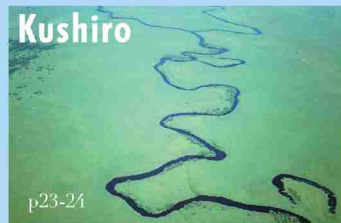
	No. 22 Quay	No. 21 Quay	
Fender	800 mm (H) x 1,600 mm (L)	600 mm (H) x 1,000 mm (L)	⤵
Distance between fenders	15.0 m	11.5 m	↗
Bitt	700 kN	500 kN	●
Distance between bitts	11.3 - 32.2 m	22.75 m	↘
Mooring post	1,000 kN	1,000 kN	⊙



Quay detail (East Port earthquake-proof cruise ship terminal)

Fender	800 mm (H) x 1,300 mm (L)	⤵
Distance between fenders	10.0 m	↗
Bitt	500 kN / 1,000 kN	● / ●
Distance between bitts	9.7 - 30.1 m	↘
Mooring post	1,500 kN	⊙





Sapporo Population: 1,940,000
 Tourist information: <http://www.sapporo.travel/?lang=en>

Seasonal events

Spring YDSAKOI Soran Festival (early June)	Autumn Sapporo Autumn Fest (mid-September - early October)
Summer Sapporo Odori Beer Garden (late July - mid-August)	Winter Sapporo Snow Festival (early February)

